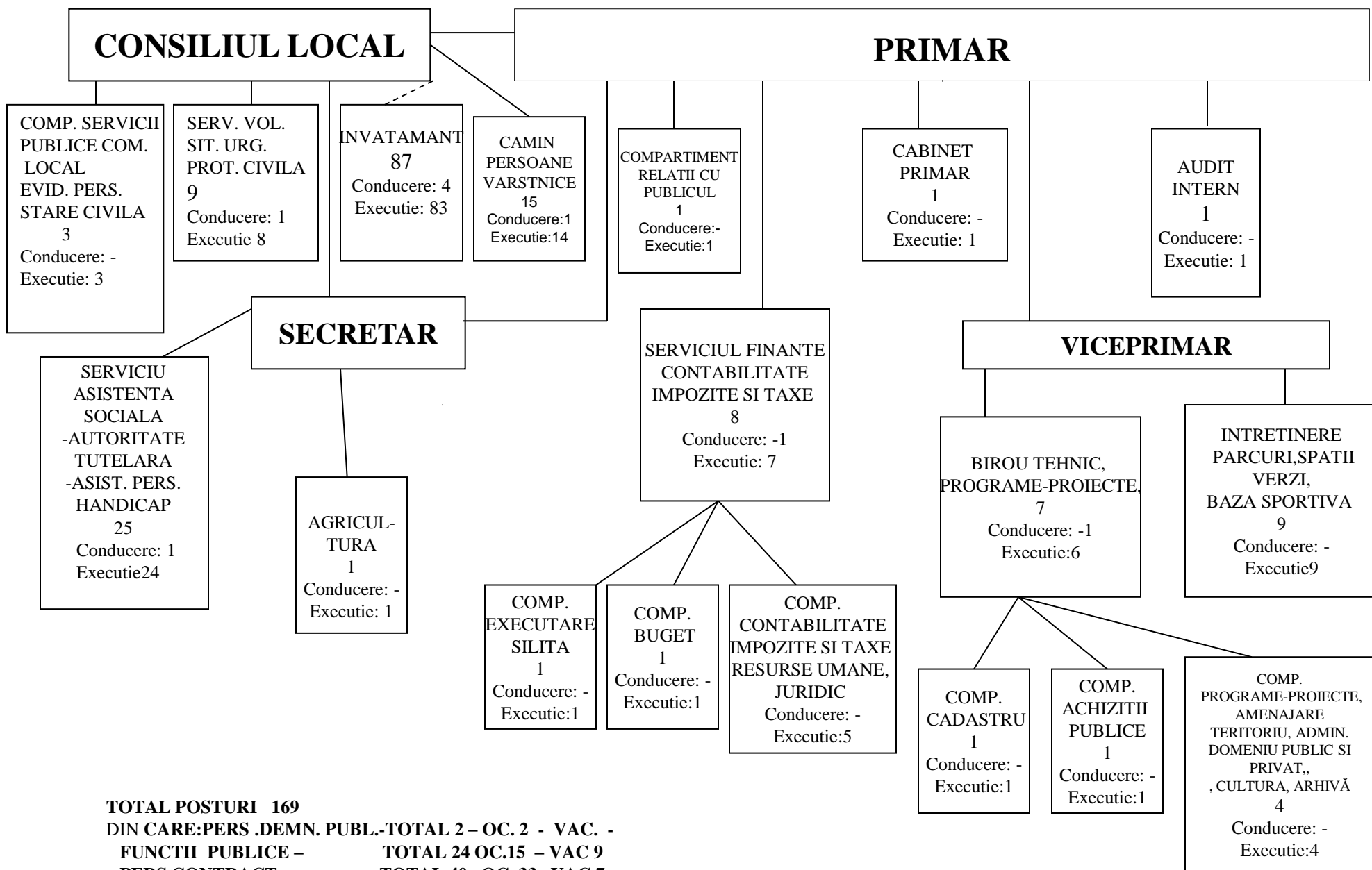


ORGANIGRAMA

ANEXA nr.1 la HCL nr. ____/2015



TOTAL POSTURI 169

DIN CARE:PERS .DEMN. PUBL.-TOTAL 2 – OC. 2 - VAC. -

FUNCTII PUBLICE – TOTAL 24 OC.15 – VAC 9

PERS.CONTRACT. – TOTAL 40– OC. 33– VAC 7

INVATAMANT - TOTAL 87 - OC. -85 - VAC. 2

CAMIN PERSOANE VARSTNICE – TOTAL 15 OC.15